

Effective Date: 2025 June 02
Status: Approved

X-15 *CLASS*

Class Rules

International X-15 Class Association



The X-15 Class was designed in 2023 by SESTAR.

INDEX

Section A - General	4
Section B - Equipment Eligibility	6
Section C - Conditions for Racing	7
Section D - Hull	13
Section E - Hull Appendages	14
Section G - Wing	15
Appendix A - Equipment Limitation	16

INTRODUCTION

This introduction only provides an informal background and the International X-15 Class Rules proper begin on the next page.

X-15 hulls, hull appendages, rigs and sails are manufacturing controlled.

All equipment shall only be manufactured by approved manufacturers – in the class rules referred to as licensed manufacturers unless otherwise permitted by these rules.

Equipment is required to comply with the International X-15 Building Specification and is subject to a World Sailing approved manufacturing control system.

X-15 hulls, hull appendages, rigs and sails may, after having left the manufacturer, only be altered to the extent permitted in Section C of the class rules.

Owners and crews should be aware that compliance with rules in Section C is NOT checked as part of the certification process.

Rules regulating the use of equipment during a race are contained in Section C of these class rules, in ERS Part I and in the Racing Rules of Sailing.

PLEASE REMEMBER:

THESE RULES ARE **CLOSED CLASS RULES** WHERE IF IT DOES NOT SPECIFICALLY SAY THAT YOU MAY – THEN YOU SHALL NOT.

PART I – ADMINISTRATION

Section A – General

A.1 LANGUAGE

- A.1.1 The official language of the class is English and in case of dispute over translation the English text shall prevail.
- A.1.2 The word “shall” is mandatory and the word “may” is permissive.
- A.1.3 Except where used in headings, when a term is printed in “**bold**” the definition in the ERS applies and when a term is printed in “*italics*” the definition in the RRS applies.

A.2 ABBREVIATIONS

- WS: World Sailing
- MNA: Member National Authority World Sailing
- X-15: X-15 Class Association
- NCA: National Class Association
- RRS: Racing Rules of Sailing
- ERS: Equipment Rules of Sailing

A.3 AUTHORITIES AND RESPONSIBILITIES

- A.3.1 The **Class Rules** authority of the class is WS, which shall cooperate with the X-15 in all matters concerning these **class rules**.
- A.3.2 Neither WS nor the X-15 accept any legal responsibility in respect of these **class rules** or any claim arising therefrom.

A.4 ADMINISTRATION OF THE CLASS

- A.4.1 WS has delegated its administrative functions of the class to the X-15.

A.5 WORLD SAILING RULES

A.5.1 These **class rules** shall be read in conjunction with the ERS and RRS.

A.6 CLASS RULES CHANGES

A.6.1 Amendments to these **class rules** are subject to the approval of WS in accordance with WS Regulations.

A.7 INTERPRETATION OF CLASS RULES

A.7.1 Interpretation of these **class rules** shall be made in accordance with WS Regulations.

Section B – Equipment Eligibility

For a **Wingfoil** to be eligible for *racing*, it shall comply with the rules in this section.

B.1 CLASS RULES AND CERTIFICATION

B.1.1 The **Wingfoil** shall:

- (a) have been manufactured by licensed manufacturers (except as otherwise stated in these class rules).
- (b) be in compliance with the class rules and have not been modified in any way other than permitted by the class rules

PART II – REQUIREMENTS AND LIMITATIONS

The **crew** and his/her equipment shall comply with the Rules in Part II when *racing*.

The rules in Part II are **closed class rules**. **Equipment inspection** shall be carried out in accordance with the ERS except where varied in this Part.

Section C – Conditions for Racing

C.1 GENERAL

C.1.1 RULES

- (a) RRS 50.1(b) is changed as per CR C.3.4.

C.2 CREW

C.2.1 LIMITATIONS

- (a) The **crew** shall consist of one person.

C.2.2 MEMBERSHIP

- (a) For all National Championships, World Championships and Continental Championships the **crew** shall be a member of his/her NCA. If there is no NCA then the **crew** must be a member of the X-15.

C.2.3 DIVISIONS

- (a) Gender divisions
 - (i) Senior Men
 - (ii) Senior Women
- (b) Age divisions
 - (i) Youth U19: shall not have attained his or her 19th birthday before or on 31st December of the year of the event.
 - (ii) Youth U17: shall not have attained his or her 17th birthday before or on 31st December of the year of the event.
 - (iii) Junior U15: shall not have attained his or her 15th birthday before or on 31st December of the year of the event.
 - (iv) Junior U13: shall not have attained his or her 13th birthday before or on 31st December of the year of the event.

C.3 PERSONAL EQUIPMENT

C.3.1 **Personal equipment** manufacturers are optional.

C.3.2 MANDATORY

- (a) For Use:
 - (i) The **crew** shall wear a helmet that shall be to the minimum standard EN1385, EN1077, EN 966, ASTM 2040, Snell S98 or equivalent, with a total area of at least 300 square centimeters of the exterior surface in a high visibility colour not divided in more than 4 parts. The Notice of Race or Sailing Instructions may change this rule to prescribe alternative or additional standards.
 - (ii) The **crew** shall carry a whistle
 - (iii) The **crew** shall wear an **impact vest** which shall comply with the minimum standard ISO 12402-5, or USCG Type III, or AS 4758 Level 50 or equivalent, and shall be used when afloat, except briefly while changing or adjusting clothing or personal equipment.

C.3.3 OPTIONAL

- (a) a **crew harness** with a maximum permitted weight of 4kg.
- (b) additional body protection gear.
- (c) a drinking container in compliance with RRS Appendix B, B.50.1(a).
- (d) an electronic or mechanical timing device.
- (e) a heart rate monitoring device
- (f) cameras and other electronic equipment
- (g) electronic equipment as required by the Organizing Authority or the X-15.
- (h) tools and spare fittings.

C.3.4 TOTAL WEIGHT

- (a) As permitted by RRS 50.1(b), the total weight of a competitor's clothing and equipment, including footwear and clothing worn below the knee, shall not weigh more than 10 kg. The harness and drinking container (empty) are considered as competitors' clothing and equipment and therefore included. When the **crew** is required to carry equipment supplied by the Organizing Authority, it shall be excluded from weighing under C.3.4.

C.4 PORTABLE EQUIPMENT

C.4.1 MANDATORY

- (a) For Use:
 - (i) The Notice of Race or Sailing Instructions may require a **Wingfoil** to carry supplied recording equipment (sound and/or video), a GPS or tracking device as

supplied by the Organizing Authority. The Organizing Authority shall provide instructions regarding its fitting to the **Wingfoil**.

C.4.2 OPTIONAL

For the avoidance of doubt, when items listed here are worn or carried by the **crew** they shall be included for weighing under C.3.4.

- (a) For Use:
 - (i) Recording equipment (sound and/or video) and personal GPS devices and any associated attachment fittings, when permitted by the Notice of Race or Sailing Instructions.

C.5 ADVERTISING

C.5.1 LIMITATIONS

Advertising shall only be displayed in accordance with WS Advertising Code.

C.6 WINGFOIL

C.6.1 REPAIR

- (a) All **repairs** require written approval unless stated otherwise in these rules.
- (b) Approval may only be granted by the X-15 Technical Committee:
technical@X-15class.org
- (c) Permission to undertake a **repair** during an event may be granted by the Event Technical Committee. The required written approval by the X-15 Technical Committee may be granted after the event.

C.6.2 LIMITATIONS

- (a) Not more than 1 **hull**, 1 **wing**, and 1 foil system with three front wings (one of each size), may be registered for an event. When lost or accidentally damaged beyond **repair**, a replacement may be used if approved by the Event Technical Committee.
- (b) During an event, replacements to registered equipment shall only be made with the approval of the Event Technical Committee unless otherwise permitted in the **class rules**.
- (c) Equipment Evolution Windows:
Equipment updates of **Hull**, **Hull Appendages** and Wings may be implemented as per below:
 - (i) For the senior (Men and Women) divisions on:
 - January 1st, 2026
 - January 1st, 2027

- January 1st, 2032
- (ii) For the Junior and Youth divisions on:
 - January 1st, 2026
 - January 1st, 2028
 - January 1st, 2030
- (d) Equipment Limitation at Events
 - (i) At World and European Championships, International WS Events, and Class-endorsed Championships, competitors shall only use the latest generation of X-15 equipment listed in Appendix A with the serial number equal or greater than the serial number listed. The Notice of Race may change this rule to add their event to this list.
 - (ii) At other events, competitors may use older generation of X-15 equipment

C.7 HULL

C.7.1 MODIFICATIONS

- (a) A maximum of 3 foot straps may be fitted to the existing inserts.
- (b) Foot straps and fittings may be removed, replaced or added during an event without approval while in compliance with C.7.1(a). Replacements or additions may be of any type and manufacturer. The total weight of all fitted foot straps with fittings shall be a minimum of 0.200 kg.
- (c) The hull box (where the hull appendages are fitted) lateral sides (port and starboard) may be shimmed with removable materials which shall not protrude outside of the box.

C.7.2 MAINTENANCE

- (a) **Cleaning** of the **hull** is permitted.

C.7.3 REPAIR

- (a) **Repairs** to the **hull** require approval as described in C.6.1 with the following exceptions:
 - (i) filling and blending of chips, gouges and splits smaller than 100mm.

C.7.4 HULL WEIGHT

- (a) The weight of the **hull** in dry conditions without foot straps shall be a minimum of:
 - (i) 95 Blue Carbon: 5.6 kg
 - (ii) 82 Blue Carbon: 5.2 kg
 - (ii) Lite Tech: 6.4 kg

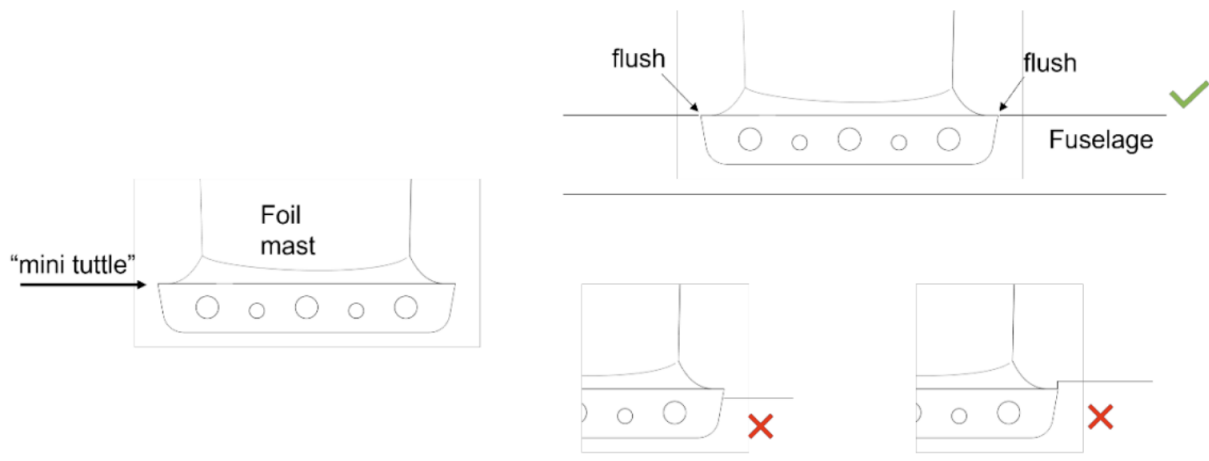
C.8 HULL APPENDAGES

C.8.1 MODIFICATIONS

- (a) The foil mast base along all the sides that fit into the hull box may be

sanded.

- (b) The foil system fittings (bolts and washers) may be replaced by any fittings of the same size with the following exception:
 - i) The angle spacers screws may be replaced by other stainless steel screws of different length.
- (c) The **crew** may replace the angle spacers for any of the original angle spacers listed in E.1.1.
- (d) The fuselage should be fitted so that it is installed flush with the foil mast horizontal part of the mini tuttle (see diagram below). The plastic cap covering the foil mast that goes in the fuselage may be **sanded** and may be trimmed flush with the fuselage. The foil mast base along all sides that fit into the fuselage may be shimmed.



- (e) The plastic angle spacer edges can be trimmed flush with the fuselage.
- (f) The mast base transversal connection screw holes may be modified to be aligned with the fuselage screw holes.

C.8.2 MAINTENANCE

- (a) **Maintenance of hull appendages** is permitted with the following exceptions:
 - (i) **Coating** is not permitted as part of **maintenance**.
 - (ii) **Sanding** as part of maintenance is only permitted on the paint layers and shall not reach the carbon fiber layer.

C.8.3 REPAIR

- (a) **Repairs** to the **hull appendages** require approval as described in C.6.1, with the following exemptions:

- (i) filling and blending of small voids (chips and gouges) smaller than 10mm x 10mm

C.10 WINGS

C.10.1 MODIFICATIONS, MAINTENANCE AND REPAIRMAINTENANCE AND REPAIR

- (a) **Repair** may be carried out without approval with the following exception:
 - (i) During an event, **repairs** of wings require the approval of the Event Technical Committee.
- (b) Transparent tape may be placed on the wing.
- (c) Any harness lines may be used
- (d) Tape may be used on the boom to mark locations
- (e) Wing leashes may be replaced
- (h) Bladders may be replaced with FreeWing X-15 bladders

C.10.2 SAIL IDENTIFICATION

If prescribed by the Notice of Race each Sail shall carry nationality flags and nationality identification, or other identification as instructed by the Notice of Race.

Section D – Hull

D.1 GENERAL

All parts of the **Hull** and its associated fittings are to be produced by licensed manufacturers unless specified otherwise in C.7.1.

D.1.1 PARTS

- (a) X-15 Blue carbon **hull** 95 for the senior Men division
- (b) X-15 Blue carbon **hull** 82 for the senior Women division
- (c) X-15 Lite tech **hull** 82 for Junior and Youth divisions
- (d) Its associated fittings:
 - (i) foilbox
 - (ii) foot straps
 - (iii) foot strap fittings
 - (iv) vent plug

D.2 IDENTIFICATION

- (a) The **hull** shall carry a manufacturers serial number and have a unique WS QR sticker applied by the licensed manufacturer.
- (b) **Hulls** shall display the official WS logo as applied by the licensed manufacturer.

D.3 MATERIALS, CONSTRUCTION AND DIMENSIONS

- (a) The **hull** shall comply with the X-15 technical specifications as approved by WS.

Section E – Hull Appendages

E.1 GENERAL

All parts of the **hull appendages** and its associated fittings are to be produced by licensed manufacturers unless specified otherwise in C.8.1.

E.1.1 PARTS

- (a) Aluminum foil for all divisions including:
 - (i) Foil Aluminum Mast 100cm
 - (ii) Three Front Wings: 560, 820, 1200
 - (iii) Rear wing 200
 - (iv) 69cm Fuselage
- (b) Its associated fittings.

E.2 IDENTIFICATION

- (a) The foil mast, front wing, rear wing and fuselage shall carry a unique **Licensed Manufacturer's Mark** and serial numbers.

E.3 MATERIALS, CONSTRUCTION AND DIMENSIONS

- (a) Hull Appendages shall comply with the X-15 technical specifications as approved by WS.

Section G – Wing

G.1 GENERAL

All parts of the Wing and its associated fittings are to be produced by licensed manufacturers unless specified otherwise in C.10.1.

G.1.1 PARTS

- (a) 6.5m² for senior Men division.
- (b) 6.0m² for senior Women division
- (c) 6.0m² for U19
- (d) 5.5m² for U17
- (e) 5.0m² for U15
- (f) 4.5m² for U13

G.2 IDENTIFICATION

- (a) Wings shall carry a **Licensed Manufacturer's Mark** and unique serial number in the tack.
- (b) The zipper tech reef panels shall carry a **Licensed Manufacturer's Mark**

G.3 MATERIALS, CONSTRUCTION and DIMENSIONS

- (a) The wings shall comply with the X-15 technical specifications.

Appendix A – Equipment Limitation

See class rules C.6.2.(d)

Equipment Item	Models	Serial Number	Date of Production
Blue Carbon hull 82	STB FOILBOARD X-15 85 95L BCS	SS25X15BCS8224060001	1 May 2023 or later
Blue Carbon hull 95	STB FOILBOARD X-15 95 95L BCS	SS25X15BCS9524060001	1 May 2023 or later
LiteTech hull	STB FOILBOARD X-15 CLASS 82 82L	SS25X15CLT8225010001	1 February 2024 or later
Foil Mast	Starboard Foil Evolution MkII X-15 One Design Aluminium Mast	12032411M100001	1 March 2024 or later
Front Wing 560	Starboard Evolution MkII X-15 One Design FW MF560	12032412 EVO MK11 X-15 560 001	1 March 2024 or later
Front Wing 820	Starboard Evolution MkII X-15 One Design FW MF820	12032412 EVO MK11 X-15 820 001	1 March 2024 or later
Front Wing 1200	Starboard Evolution MkII X-15 One Design FW MF1200	12032412 EVO MK11 X-15 1200 001	1 March 2024 or later
Rear Wing	Starboard Evolution MkII X-15 RW	12032411001 X-15 EVO200-0	1 March 2024 or later
Fuselage	Starboard Foil Set Evolution MkII X-15 One Design Aluminium Fuselage	EVO69EMK11-J 0001 50104	1 March 2024 or later
Wing 6.5m ²	Free Wing X-15 Class 6.5	A107011	1 April 2024 or later
Wing 6.0m ²	Free Wing X-15 Class 6.0	A107014	1 April 2024 or later
Wing 5.5m ²	Free Wing X-15 Class 5.5	A107047	1 April 2024 or later
Wing 5.0m ²	Free Wing X-15 Class 5.0	A107054	1 April 2024 or later
Wing 4.5m ²	Free Wing X-15 Class 4.5	A107060	1 April 2024 or later

Effective Date: Provisional

Previous Issue: None

© World Sailing