

Offshore Special Regulations

3.14 Pulpits, Stanchions, Lifelines

A submission from the Vice-Chair, Special Regulations Sub-Committee

Purpose or Objective

The purpose of this submission is to clarify the location of the perimeter of the working deck by including a set of diagrams.

Proposal

3.14 Pulpits, Stanchions, Lifelines

3.14.1 General

The perimeter of the deck surrounded by system of lifelines and pulpits as follows:

- a) continuous lifelines fixed only at (or near) the bow and stern. However, a gate on each side of a boat is permitted. Except at its end fittings and at gates, the movement of a lifeline in a fore-and-aft direction shall not be constrained. Temporary sleeving shall not modify tension in the lifeline,
- b) minimum heights of lifelines and pulpit rails above the perimeter of the working deck and vertical openings:
 - i upper: 600 mm (24"),
 - ii intermediate: 230 mm (9"),
 - iii vertical opening: no greater than 380 mm (15") except that on a boat with a **series date** before 1993 where it shall be no greater than 560 mm (22"),
 - iv a boat less than 8.5 m (28') LH may use a single lifeline system with a height between 450 mm (18") and 560 mm (22").
- c) lifelines permanently supported at intervals of not more than 2.2 m (7'-2 1/2") and not passing outboard of supporting stanchions,
- d) pulpit and stanchion bases permanently installed with pulpits and stanchions mechanically retained in their bases,
- e) the outside of pulpit and stanchion base tubes no further inboard from the perimeter of the deck than 5% of **boat beam** or 150 mm (6"), whichever is greater, nor further outboard than the perimeter of the deck. If a boat's first launch series date is after 2024 the perimeter of the deck is defined as the hull and deck intersection at an angle of not more than 15° to the horizontal in a transverse plane when the boat yacht is upright (see figure 2),

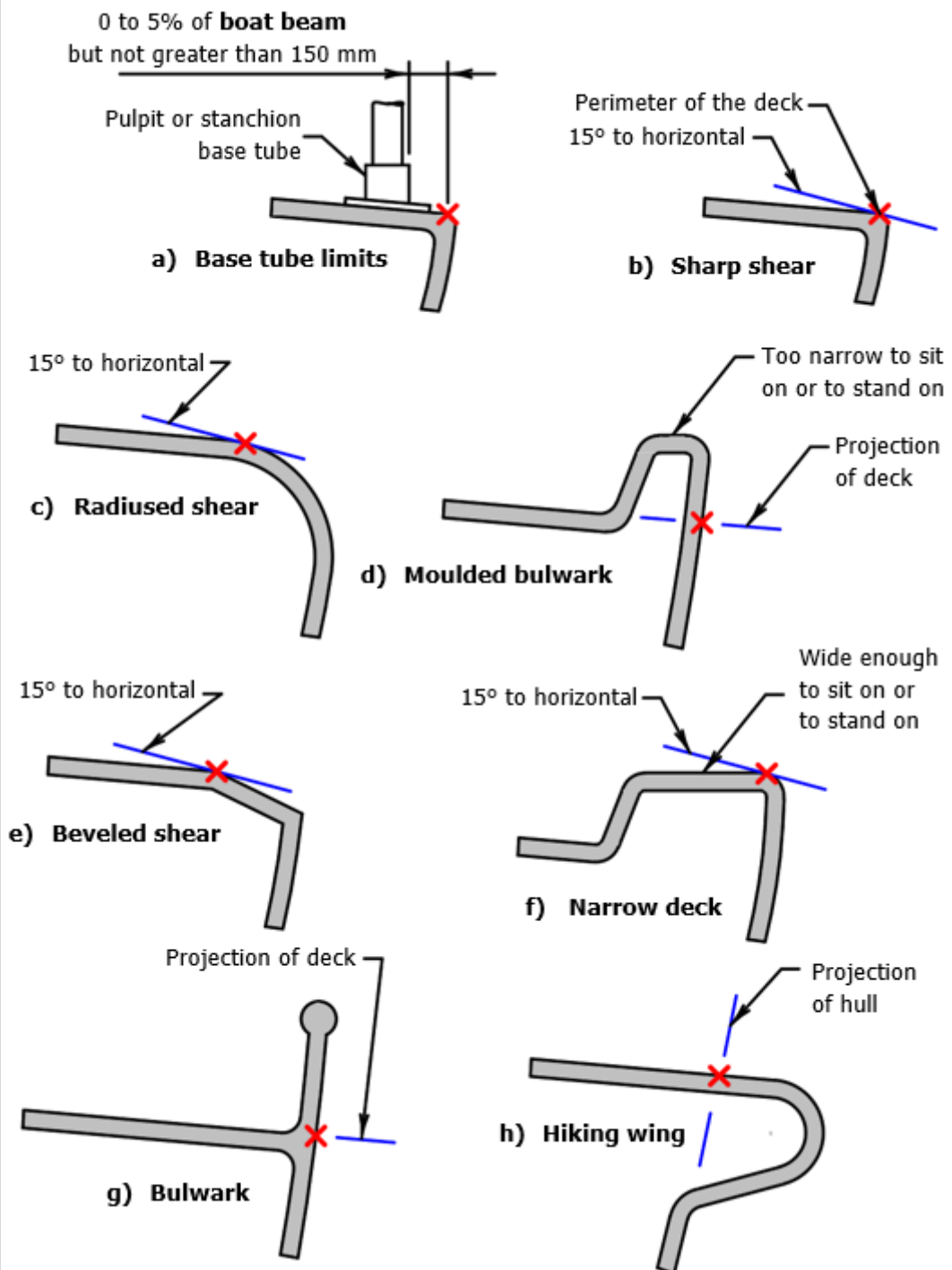


Figure 2 – Perimeter of the Deck

- f) stanchions straight and vertical except that:
- i within the first 50 mm (2") from the deck, stanchions shall not be displaced horizontally from the point at which they emerge from the deck or stanchion base by more than 10 mm (3/8"),
 - ii stanchions may be angled to not more than 10° from vertical at any point above 50 mm (2") from the deck.

**

**

**

- g) a bow pulpit may be open provided the opening between the pulpit and any part of the boat does not exceed 360 mm (14") (see Figure 3),

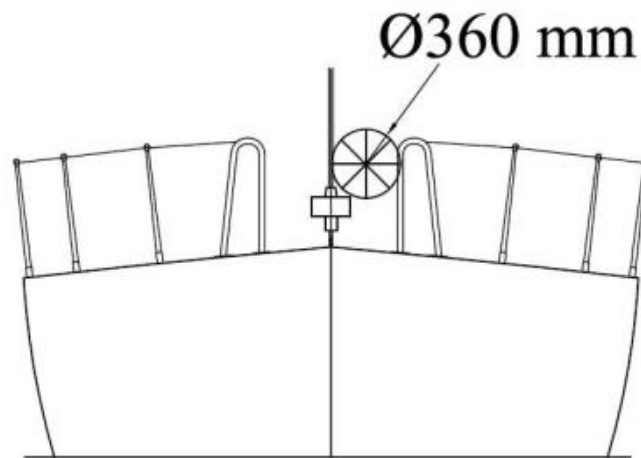


Figure 23 – Diagram Showing Pulpit Opening

- h) lifelines may terminate at or pass through adequately braced stanchions set inside and overlapping the bow pulpit,
- i) when a deflecting force of 4 kg (8.8 #) is applied to a lifeline at the mid-point of the longest span between supports that are aft of the mast, the deflection shall not exceed:
- i 50 mm (2") for an upper or single lifeline.
 - ii 120 mm (4 ¾") for an intermediate lifeline.

Additional Changes:

1. Add this figure to the table of contents and renumber subsequent figures
2. Renumber: Figure 3 – Storm Sails in 4.27

Current Position

The proposal is a marked-up version of the current position.

Reasons

1. Illustrations are an effective way to communicate textual information.