



WORLD SAILING APPROVED SERIES PRODUCTION BOARD REGISTRATION SYSTEM

1. Introduction

A WORLD SAILING Approved Series Production board is a mass-produced board made in a production run of not less than 50 Funboard or 25 Formula/Raceboard units per board. Each board model shall be produced using the same building specification.

2. Registration Deadlines

The deadline for the completion of the registration process is as follows depending on the class:

- **Funboard**
60 days prior to the start of a World Championship and **30 days** prior to the start of a Continental Championship.
- **Formula Board**
The deadline for the completion of the registration process is **60 days** prior to the start of a World Championship
- **Raceboard**
The deadline for the completion of the registration process is **30th September** before the year of competition.

To complete the registration, World Sailing must receive the following:

- Board Registration **Form Part I**, including:
- **Graphic Design** - files highlighting the World Sailing approved series production logo
- **Outline** - highlighting the dimensions as described in Appendix 1 of this document
- **Layup** - highlighting the deck and underside skin, core materials and internal structures
- **Payment** - Fees vary depending on the model being registered
 - £50 British Pounds for every Funboard Board.
 - £300.00 British Pounds for every Formula Board.
 - £600.00 British Pounds for every Race Board.
- Board Registration **Form Part II**, including any required updates to the specification submitted in **Form Part I**

No board shall compete in IFCA, FWS or RAC events unless it is a series production board registered with the WS and included in the appropriate Production Board list.



WORLD SAILING APPROVED SERIES PRODUCTION BOARD REGISTRATION SYSTEM

3. Class Rules

When a manufacturer has decided that a new design shall be made available for competitors to compete in Funboard, Formula or Raceboard events, it shall be first checked that the proposed design complies with the current version of the Relevant **Class Rules**. Manufacturer's attention should be paid to the section in rule B that concerns the WORLD SAILING logo, which must be displayed on each board with the text "WORLD SAILING Approved Series Production Board". Manufacturers are also advised to make sure that the dimensions of the board comply with the current class rules.

Please contact WORLD SAILING for copies of the latest version of the class rules, or visit the website: www.sailing.org/our-sport/world-sailing-classes/

4. Brand Registration

If a brand/manufacturer has not registered within the updated (2025) board registration scheme, they must first register within the system. This can either be done by contacting the World Sailing Technical Team or direct submission via the **Manufacturer Registration Form**, available on the [website](#) or [here](#). Once all information has been confirmed, WS will use it to build Board Registration Forms based on the company information provided, Company information details will be kept strictly confidential. Once complete, a link to Form Part 1 will be emailed to the manufacturer, through which all required information can be submitted.

5. Form Part I

As soon as a board manufacturer is ready to start production, after any prototypes and testing, Form Part 1 must be completed. The form should be submitted along with the required files as outlined above (graphic design, outlines, layup). Please see **Section 9** for more detailed instructions on how to correctly fill in the form.

On receipt of these forms WS will review the submitted information, checking for compliance with class rules and that all required files have been provided. If all information has been correctly entered an invoice will be raised by World Sailing. Payment is due within 30 days. The registration date of the board is recorded on the date that payment is received.

The **World Sailing** Logo can only be applied to boards that have completed registration Part I and confirmation that the board has been correctly registered has been received from the World Sailing Technical team. The Logo must not be applied to boards before this point.



WORLD SAILING APPROVED SERIES PRODUCTION BOARD REGISTRATION SYSTEM

6. Form Part II

When at least ten (10) boards are manufactured and are ready for inspection with the production tooling, **Form Part II** should be completed, noting any changes in specification from those originally stated on **Form Part I**.

The link to **Form Part II** will be emailed to the manufacturer on completion of **Form Part I**. If the link can't be found or there are any issues accessing/viewing, please contact the Technical Team for assistance. Please also check that all company information on the form is correct as this will be used in the event of an inspection being scheduled. Please see **Section 9** for more detailed instructions on how to correctly fill in the form.

These boards may undergo a technical inspection prior or after the board being added to the relevant WORLD SAILING approved list. The builder will be required to liaise with WORLD SAILING for the inspection to be scheduled and details of the inspection to be agreed. Reasonable pre-agreed travel costs shall be paid by the builder to the WORLD SAILING representative.

7. Registration

WORLD SAILING will enter the board on the relevant list of WORLD SAILING Approved Series Production Boards only when the procedure has been completed and all invoices and costs, if relevant, settled.

Additional information and approved board's lists can be downloaded from the WORLD SAILING website from the following link: [World Sailing - Equipment Registration](https://www.worldsailing.com/equipment-registration)

8. Design or Production Changes

If any changes in the building specification are made to a registered board, WORLD SAILING must be notified immediately. The changes may make the board liable for re-registration or a new registration.



WORLD SAILING APPROVED SERIES PRODUCTION BOARD REGISTRATION SYSTEM

9. Form Submission Details Form Part I

As part of the new system, to register with the program a manufacturer must contact the World Sailing Technical Team and confirm all contact and company information currently on file is correct, or update information where required. This both helps to validate the current information held by World Sailing and reduce time required for form submission once **Form part I** has been created. As soon as all information has been confirmed, WS will use it to build Board Registration Forms based on the company information provided. Once complete, a link to **Form Part I** will be emailed to the manufacturer, through which all required information can be submitted.

If at any time a manufacturer is unable to find the correct link to Form Part I or is having any issues with access, please contact the WS Technical Team.

By submitting the form, the page refreshes and a new copy of the form will appear – subsequent models can be entered into the new form. Once **Form Part I** Has been submitted an email will follow confirming submission, this email will contain a link for **Form Part II**. When completing **Form Part II**, any link can be used to access the form, you don't need to use the link from the corresponding **Form Part I**.

Please submit the form once for every board being registered, for example if you were to register 5x boards with the model name "speed demon", and the sizes 62.5, 65, 67.5, 70, 75, then you would need to submit the form 5 times, once for each board size. Forms with multiple sizes entered will not be registered correctly and will delay the registration process.

If you wish to register the board to be eligible for racing in multiple classes, please select each class that you wish to enter. Please note that payment will be required for each class entered, so if entering for both Funboard and Raceboard classes, both Fees of £50 and £600 would be required. Entering for both Slalom/Speed and Wave/Freestyle events will only incur a single charge of £50 for funboard boards.

The Following page highlights the layout of the form and how to enter information.



WORLD SAILING APPROVED SERIES PRODUCTION BOARD REGISTRATION SYSTEM

smartsheet

Board Registration Form Part 1

WORLD SAILING APPROVED SERIES PRODUCTION BOARD REGISTRATION
PART 1
CONFIDENTIAL

Please fill in all fields, incomplete or incorrect information may lead to delayed or failed applications. Additional information and instructions are available at the world sailing website along with FAQ's

Please ensure you have files ready for upload before filling in this form

DEADLINES

The deadline for the completion of the registration process is Follows:

-IFCA-

60 days prior to the start of a World Championship and 30 days prior to the start of a Continental Championship.

-FWS-

60 days prior to the start of a World Championship

-RAC-

30th September before the year of competition

To complete the registration, World Sailing must receive both parts 1 and 2 of the form together with the appropriate fee.

No board shall compete in IFCA, FWS or RAC events unless it is a series production board registered with the WS and included on the Production Board list.

Company Details

-This Section is pre-filled to contain any company details that would have been provided in previous versions of the system, for example:

World Sailing Ltd
Office 401, 4th Floor
3 Shortlands
London
W6 8DA
United Kingdom

Contact person - Obi Groombarke
Telephone Number - +44 7562 956 308
Email - obi.groombarke@sailing.org

Company Details Update

Please tick this box if an update to any of the details above is required

☐

Invoice Details

Invoice details for the manufacturer need to be displayed here, eg:

World Sailing Ltd
Attention: Finance Division
Office 401, 4th Floor
3 Shortlands
London
W6 8DA
United Kingdom

VAT Number (if applicable): GBXXXXXXX

Invoice details Update

Please tick this box if an update to any of the Invoice details above is required

☐

Board Details

Please complete fully - information entered here may be referred to in the case of a dispute

Model *

Model Year *

Brand

Board Type *

Please check all information in the company details section of the form is correct, any information entered here is used to contact the relevant company - incorrect information could lead to delayed or failed applications

If any information needs to be updated, this box should be checked. Once the box is checked a section of the form will open up below where the information can be entered

Information entered in this section is used to generate the invoice for payment of the required fee, please check the details are correct before submitting - incorrect information could lead to delayed or failed applications.

If any information needs to be updated, this box should be checked. Once the box is checked a section of the form will open up below where the information can be entered

From here onwards, information is entered as per the old system – this contains all information on the board and basic dimensions etc.



WORLD SAILING APPROVED SERIES PRODUCTION BOARD REGISTRATION SYSTEM

smartsheet

Board Registration Form Part 1

WORLD SAILING APPROVED SERIES PRODUCTION BOARD REGISTRATION
PART 1
CONFIDENTIAL

Please fill in all fields, incomplete or incorrect information may lead to delayed or failed applications. Additional information and instructions are available at the world sailing website along with [FAQ's](#)

Please ensure you have files ready for upload before filling in this form

DEADLINES

The deadline for the completion of the registration process is Follows:

-IFCA-

60 days prior to the start of a World Championship and 30 days prior to the start of a Continental Championship.

-FWS-

60 days prior to the start of a World Championship

-RAC-

30th September before the year of competition

To complete the registration, World Sailing must receive both parts 1 and 2 of the form together with the appropriate fee.

No board shall compete in IFCA, FWS or RAC events unless it is a series production board registered with the WS and included on the Production Board list.

Hull - including only mast-track and skeg box

Number of Footstraps *

Skegbox System *

Distribution *

By ticking this box, you Acknowledge the distribution requirements below

☐

We hereby grant permission to start a production run of a minimum:
-50 boards per range, for Funboard Models
-25 boards per range for Formula or Raceboard Models

To be distributed internationally, and that the board itself meets the requirements of the current International Class Rules.

The required initial production quantity of 10 boards will be confirmed within three months by completing **Part II** of this Registration, duly signed by the manufacturer.

You accept that WORLD SAILING or a representative of WORLD SAILING may ask for proof of distribution and inspect the premises of production and you realise that non-compliance may result in the banning of this board from all IFCA, FWS or RAC events and further action as decided by WORLD SAILING.

Construction *

By ticking this box, you acknowledge the construction requirements below

☐

You agree to supply only boards built in accordance with the above specifications and that the final weight value shall be within tolerance of 5% of the value recorded above (the maximum weight shall apply only to boards in retail outlets, ie. before being sailed).

All boards produced will be supplied marked with the approved WORLD SAILING logo (Approved Series Production: lock-up guidelines can be found [here](#)).

You accept the final authority of WORLD SAILING on Measurement matters and accept the arbitration and decision of WORLD SAILING in this respect.

Measurements and file Upload

Please fill out this section and upload files as prescribed in the World Sailing Series Production Board Registration document available [here](#).

Length Straight (mm) *

Width - Maximum *

By ticking the box shown here, you are acknowledging and confirming that you comply with the minimum production and distribution requirements:

-50 Boards for Funboard Models

-25 Boards for Formula or Raceboard Models

-Global Distribution

-10 boards will be ready for inspection within 3 months

By ticking the lower box, you are acknowledging and confirming that you comply with the production requirements:

-construction tolerances of 5%

-all boards are produced with the World Sailing Logo, with the correct position and size as per the lock-up guidelines



WORLD SAILING APPROVED SERIES PRODUCTION BOARD REGISTRATION SYSTEM

☒ smartsheet

Board Registration Form Part 1

WORLD SAILING APPROVED SERIES PRODUCTION BOARD REGISTRATION
PART 1
CONFIDENTIAL

Please fill in all fields, incomplete or incorrect information may lead to delayed or failed applications. Additional information and instructions are available at the world sailing [website](#) along with [FAQs](#)

Please ensure you have files ready for upload before filling in this form

DEADLINES

The deadline for the completion of the registration process is as follows:

-IFCA-

60 days prior to the start of a World Championship and 30 days prior to the start of a Continental Championship.

-FWS-

60 days prior to the start of a World Championship

-RAC-

30th September before the year of competition

To complete the registration, World Sailing must receive both parts 1 and 2 of the form together with the appropriate fee.

No board shall compete in IFCA, FWS or RAC events unless it is a series production board registered with the WS and included on the Production Board list.

The board registration system is provided as a service to the members of the International Sailing Federation and its member associations. The International Sailing Federation and its member associations accept no responsibility for the accuracy of the information provided and the arbitration and decision of WORLD SAILING in this respect.

Measurements and file Upload

Please fill out this section and upload files as prescribed in the World Sailing Series Production Board Registration document available [here](#).

Length Straight (mm) *

Width - Maximum *

Fin Box Slot (a) *

Fin Box Slot (b) *

Mast Track Slot (a) *

Mast Track Slot (b) *

File Upload *

Please upload Graphics, Outlines and Layout drawings here

Drag and drop files here or [browse files](#)

Confirmation of file uploads

- ☐ 1.Graphics
☐ 2.Graphics Highlighting WS Logo (Can be included in Graphics file)
☐ 2.Outline
☐ 3.Layout

Declaration of Responsibility

By clicking submit:

I confirm that the information provided in this form is true, complete, and accurate.

Personal data collected as part of this survey will be handled in accordance with World Sailing's digital and communications privacy notice which can be found here: [Link](#)

☐ Send me a copy of my responses

Please ensure all measurements are correct and accurate, measurements entered in this section are used to register the board within the Approved Series Production lists. Any incorrect measurements could lead to the board being disqualified or excluded from events

When uploading files, please add all files to a zipped folder.

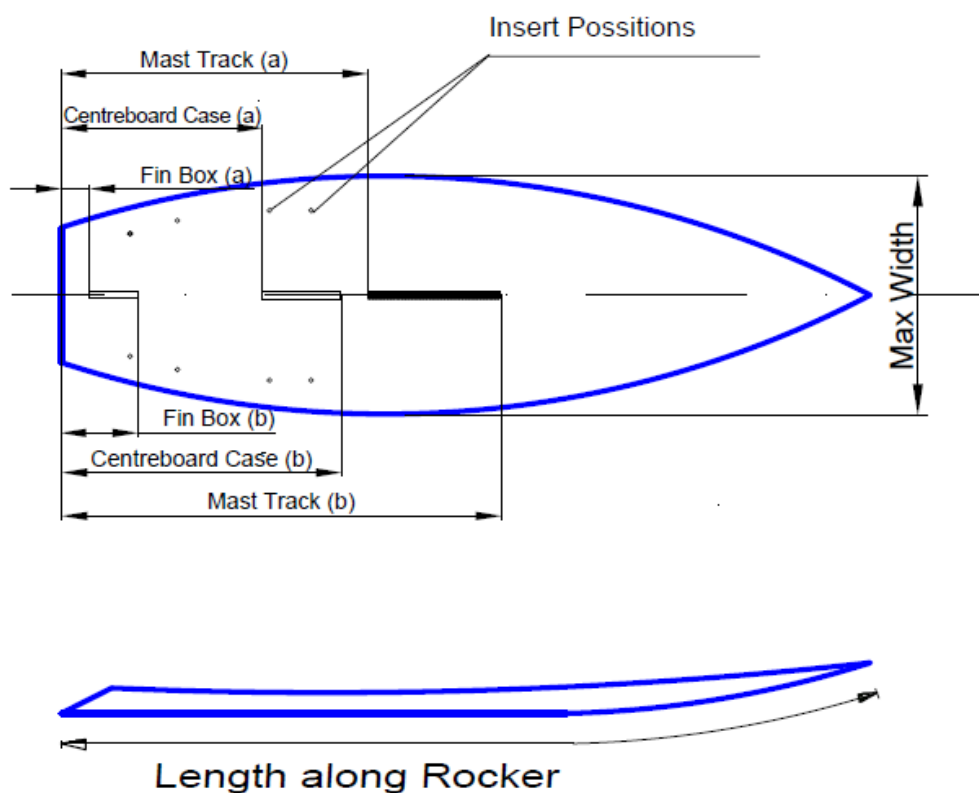
Please confirm all uploads here

By submitting the form you confirm that all information has been provided correctly. The box here can be checked if you wish to retain a copy of your responses for your own tracking.
please check all entered information before submitting. Information entered incorrectly can lead to delays

WORLD SAILING APPROVED SERIES PRODUCTION BOARD REGISTRATION SYSTEM

10. Form Part I measurement Guidelines

Measurements submitted in **Form Part I** should be taken as shown in the following diagrams:

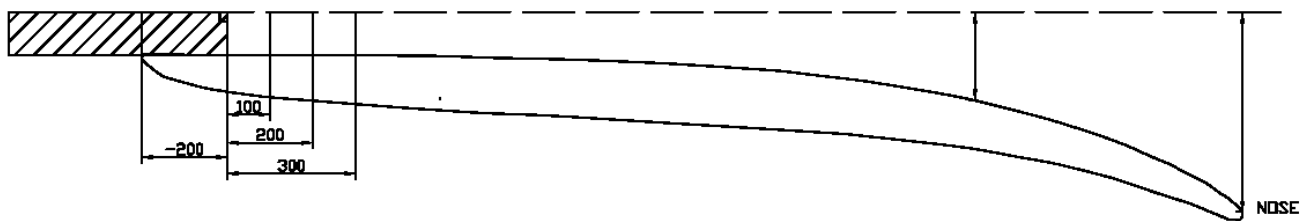


Manufacturers are also required to submit detailed dimensions of their board as follows (details may be submitted in the form of an outline measurements document)

With the bottom uppermost, mark off the hull at 100mm intervals, starting 200mm from the tail/ transom. Then, set up a spirit level laser pointing down the length of the board, with the beam starting at the '0' station, 200mm from the tail. Then measured at each station vertically to find the rocker measurements.



WORLD SAILING APPROVED SERIES PRODUCTION BOARD REGISTRATION SYSTEM



11. Form Part I Layup Guidelines

When submitting layup files, please ensure the files contain the following information:

- Deck Layup including orientation
- Bottom Layup
- Deck-hull joint details
- Core details
- Re-enforcements.
- Insert/local re-enforcement.
- Foil box re-enforcement.



WORLD SAILING APPROVED SERIES PRODUCTION BOARD REGISTRATION SYSTEM

12. Form Submission Details Form Part II

Once **Form Part I** has been submitted, an email will follow confirming the submission along with a link for **Form Part II**.

Form Part II should only be submitted once the manufacturer has finished producing 10 boards and they are ready for inspection. Any differences in the final production characteristics from those submitted in **Form Part I** should be reported in this form so that the final board specifications can be published. Boards entered in events that do not match the reported dimensions will be unable to race in IFCA, FWS or RAC events.

If at any time a manufacturer is unable to find the correct link to Form Part II or is having any issues with access, please contact the WS Technical Team.

Please submit the form once for every board being registered, forms with multiple sizes entered will not be registered correctly and will delay the registration process.

Once **Form Part 2** has been completed and all information checked along with receipt of payment, the board is considered as registered and will be added to the Approved Series Production Board list for the relevant class. Only boards listed will be eligible for use at IFCA, FWS or RAC events.

The Following page highlights the layout of the form and how to enter information.



WORLD SAILING APPROVED SERIES PRODUCTION BOARD REGISTRATION SYSTEM

smartsheet

Board Registration Form Part 2

WORLD SAILING APPROVED SERIES PRODUCTION BOARD REGISTRATION

PART 2

CONFIDENTIAL

Please fill in all fields, incomplete or incorrect information may lead to delayed or failed applications. Additional information and instructions are available at the world sailing website along with FAQs

Please ensure you have any required files ready for upload before filling in this form

DEADLINES

The deadline for the completion of the registration process are as follows:

-IFCA-
60 days prior to the start of a World Championship and 30 days prior to the start of a Continental Championship.

-FWS-
60 days prior to the start of a World Championship

-RAC-
30th September before the year of competition

To complete the registration, World Sailing must receive both parts 1 and 2 of the form together with the appropriate fee.

No board shall compete in IFCA, FWS or RAC events unless it is a series production board registered with the WS and included on the Production Board list.

Company Details

-This Section requires manual input - please update!!

World Sailing Ltd
Office 401, 4th Floor
3 Shortlands
London
W6 8DA
United Kingdom

Contact person - Obi Groombarke
Telephone Number - +44 7562 956 308
Email - obi.groombarke@sailing.org

Model *

Board Details

Please Specify Below if any amendments are required to the original specification after production of 10 boards

Amendments Required

☐

Board Inspection Location

Please check the inspection location details are correct.

If any updates are required, please enter below

Company XXX
Street xxx
town xxx
country xxx
country xxx
postcode xxx

Contact Name
Contact Email

Update Required

Please select this box if any of the above details require amendment

☐

Declaration of Responsibility

By clicking submit:

I confirm that the information provided in this form is true, complete, and accurate.

I declare that I have produced at least 10 boards of the above brand name and model.

Personal data collected as part of this survey will be handled in accordance with World Sailing's digital and communications privacy notice which can be found here: [Link](#)

☐ Send me a copy of my responses

Please ensure the board model entered here is correct and matches the details being entered. Board specifications are indexed using the model so any incorrect model names or data may delay applications

If any of the Board specifications previously submitted are different/incorrect post manufacturing, please check this box. Once checked a section will be displayed where new information can be submitted

Please ensure the inspection location and contact details are correct. These are the details that will be used in the event of an inspection of the manufacturer. If updates are required, please check box and a section will be displayed to enter any updated information



WORLD SAILING APPROVED SERIES PRODUCTION BOARD REGISTRATION SYSTEM

WORLD SAILING:

WORLD SAILING is based in the Isle of Man, an offshore island of the UK. All payments must be made to WORLD SAILING Ltd., Isle of Man. The administrative arm of the WORLD SAILING is WORLD SAILING (UK) Ltd.

Contact

Technical & Offshore Department

Email: technical@sailing.org
www.sailing.org