



World Sailing

Event handbook



Intro

- Sustainability is at the heart of World Sailing. World Sailing Events will not only deliver world-class sailing competitions but showcase and deliver world-class event sustainability, aligning and supporting World Sailing's Sustainability Agenda 2030.

- Planning doc
 - General Information tab

Objectives and targets

Adopt the guidelines for ISO 20121 – ‘A specification for sustainable events’ at the Event.

Meet the Sailors for the Sea Clean Regattas programme gold level or above.

Create a sustainability plan to include

- Legal register for the event specific to the country of operations
- Biodiversity protection plan
- Pollution control plan
- Waste management plan, elimination of single use plastics including cable ties and bottled water
- Education activities and community engagement

Communicate efforts to sailors, volunteers and staff on topics important before, during and after the event to include:

- Biodiversity protection – measures taken to protect habitats and prevent the spread of invasive species
- Waste
- Travel
- Single use items including plastic
- Sustainability education and engagement activities

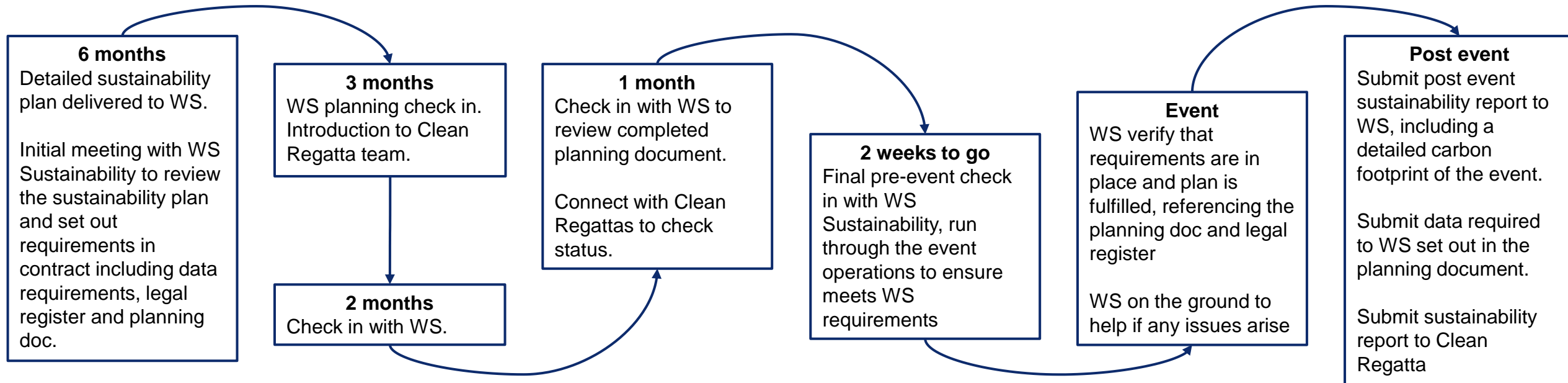
Activate

- Encourage low carbon and active transport
- Specify water only boat cleaning
- Mark all surface water drains

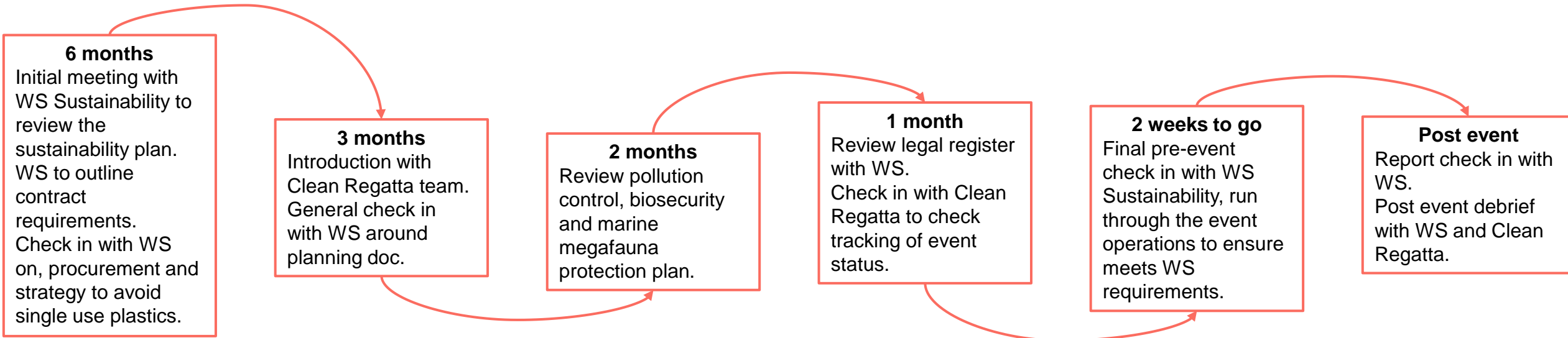
Report

- Post event sustainability report to include:
 - High level carbon footprint including scopes 1, 2 and 3 emissions
 - Data on utilities used during the event including fuel consumptions, waste production, water usage, accommodation
 - Travel for sailors, race officials, volunteers and staff accounted for
 - Any actions taken to reduce the carbon footprint of the event
 - Actions taken to achieve the Clean Regattas framework
 - Education activities implemented to engage the community

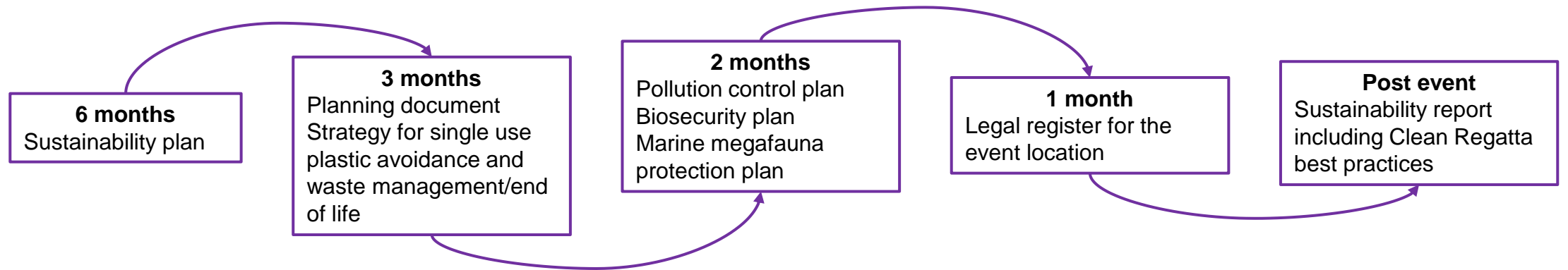
Timeline



Key meetings and deliverables



Actions



Document to refer to:

- Planning sheet
 - Clean Regatta tab
 - Waste tab

Best practice targets

- The minimum best practice targets a WS event should achieve is:
 - To meet the Sailors for the Sea [Clean Regatta](#) Platinum standard
 - To operate a sustainable event management system aligned with the international standard ISO 20121.
 - Active travel and Public transport
 - To implement a comprehensive waste management plan that targets:
 - the [elimination of single-use](#) materials, in particular plastics
 - the [safeguarding of the waters](#) from waste,
 - the establishment of a [reuse and repurposing plan](#) for sailing equipment and clothing



Planning

Sections include...

- Legal register
- Biodiversity protection plan
- Pollution control plan
- Waste management plan
- Education and engagement

Sustainability Event Plan

- 6 months prior to the event a sustainability plan should be generated and shared with World Sailing.
 - The plan must align with the sustainability objectives set out by World Sailing.
 - The plan must have identified its own sustainability impacts (positive and negative) and address these.
 - The plan should be supported by an action plan that aims to deliver on the event's sustainability objectives.
 - The strategy must engage with the participating competitors/delegates , event suppliers and partners for example all signing a sustainable procurement charter for the event.

Topics to include in the sustainability plan:

- Local regulations for events
- Single use plastic avoidance strategy
- Renewable energy
- Responsible sourcing
- Biosecurity plan
- Marine megafauna protection plan
- Pollution control
- Waste management plan
- Educational activity for sailors
- Community involvement

Clean Regatta



The [Clean Regatta](#) framework, by Sailors for the Sea, outlines a series of green boating practices and depending on the percentage of those achieved a level is awarded from Participant through to Platinum. World Sailing requires all events to achieve the Platinum level. This requires 95% of the best practices to be reached and to submit a sustainability report.

The [20 best practices](#) are set out on responsible waste management, community involvement, elimination of single use items, green boating and environmental stewardship.

The team at Sailors for the Sea is available to advise on how best to implement the best practices before your event, connect and ensure you are on the right track. Post event you will need to submit a sustainability report through the Clean Regattas portal to have the event certified as Platinum.

Agenda 2030 target:

21. World Sailing will collaboratively review and approve an event sustainability standard (certified by ISEAL) which can be voluntarily used by all sailing events by 2020. World Sailing will review approved external standards on an annual basis.

35. World Sailing will review and identify certification and best practice standards internationally and support their adoption by 2020.

RESPONSIBLE WASTE MANAGEMENT	COMMUNITY INVOLVEMENT	ELIMINATION OF SINGLE-USE ITEMS
<input type="checkbox"/> Organize a Green Team <input type="checkbox"/> Ensure Proper Waste Bin Placement and Signage <input type="checkbox"/> Divert Food Waste from the Landfill <input type="checkbox"/> Use Paperless Event Management	<input type="checkbox"/> Publicize Your Sustainability Efforts <input type="checkbox"/> Involve Local Organizations <input type="checkbox"/> Post Educational and Reusable Signage <input type="checkbox"/> Serve Local Food or Source Seafood Sustainably	<input type="checkbox"/> Eliminate Single-Use Water Bottles and Provide Water Refill Stations <input type="checkbox"/> Eliminate Plastic Straws <input type="checkbox"/> Serve Food with Plastic-Free Dinnerware <input type="checkbox"/> Skip Bags or Go Reusable <input type="checkbox"/> Award Practical Items or Use a Perpetual or Upcycled Trophy
GREEN BOATING	ENVIRONMENTAL STEWARDSHIP	 <p>To learn more, visit sailorsforthesea.org</p>
<input type="checkbox"/> Use Eco-Smart Management Techniques <input type="checkbox"/> Prevent Toxins from Entering the Water <input type="checkbox"/> Encourage Green Boating Practices	<input type="checkbox"/> Host a Beach or Marina Clean-up <input type="checkbox"/> Promote Alternative Transportation <input type="checkbox"/> Increase Awareness of Wildlife and Habitat Protection <input type="checkbox"/> Offer Vegetarian or Vegan Alternatives	

Document to refer to:

- Event planning
 - Clean Regatta tab

Legal register for the event

- To operate at ISO20121 standard a legal register for the event is needed covering local environmental, social and economic legislation in relation to a sustainability issue that applies to the event.
- If you have had to obtain a permit to operate for the event then this needs to be detailed here, explaining what the permit is for and the obligations attached to it
- This will be reviewed with WS to ensure the event is compliant.
- Please use the legal register template provided.

Water quality

Water quality is imperative for all competitors, staff and volunteers to ensure the water is safe for sailing.

For the World Sailing Championships and Youth World Championships it is key that host venues conduct regular water quality tests to ensure water is safe for sailing. Water quality samples should be taken from three different locations on the field of play.

For other World Sailing owned events please speak to your local environment agency to gain insight from their recent testing results to ensure water quality is at a safe level.

Please make us aware of areas that need to be highlighted as higher risk of pollution event, such as sailing on a river or near an offshore farm.

Inform World Sailing Sustainability immediately if there is an incident of poor water quality.

Agenda 2030 target:

15. World Sailing will achieve the World Sailing water quality standard at all venues hosting World Sailing events by 2020.

World Sailing water quality standard

E. Coli:

- Primary contact (NMP/100ml) = 800
- Secondary contact (NMP/100ml) = 2000

Enterococci:

- Primary contact (NMP/100ml) = 200
- Secondary contact (NMP/100ml) = 500



Drinking Water Provision

To help eliminate single use plastics from the event, water refill stations are key.

Water refill stations should be provided on site

To ensure there are sufficient numbers of drinking water refill stations please refer to the provision guidance.

Communication to athletes to bring their refillable bottles is key.

Refer to slide 46 for more information on drinking water provision at events.



Clean Regatta targets

ELIMINATION OF SINGLE-USE ITEMS

- ☐ Eliminate Single-Use Water Bottles and Provide Water Refill Stations
- ☐ Eliminate Plastic Straws
- ☐ Serve Food with Plastic-Free Dinnerware
- ☐ Skip Bags or Go Reusable
- ☐ Award Practical Items or Use a Perpetual or Upcycled Trophy

Document to refer to:

- Planning sheet
 - Protecting Nature tab
 - Water tab
 - On water ops tab
- World Sailing Marine Megafauna Guidance

Protecting the environment

World Sailing Events are expected to take measures and ensure their events do not negatively impact the environment. World Sailing Events will be expected to:

- Develop a Biosecurity/nature protection plan
- Develop a Marine Megafauna Protection plan to avoid strikes and report on all incidents
- Develop a Pollution Control plan
- Secure all event-related rubbish on and off the water to ensure no waste enters the water.



Clean Regatta targets

ENVIRONMENTAL STEWARDSHIP

- ☐ Host a Beach or Marina Clean-up
- ☐ Promote Alternative Transportation
- ☐ Increase Awareness of Wildlife and Habitat Protection
- ☐ Offer Vegetarian or Vegan Alternatives

Nature protection plan

Biosecurity is based around preventing potentially harmful invasive species entering a habitat and causing harm to existing biodiversity. Sailing relies on healthy oceans and water bodies as a sport therefore, we need to ensure that events protect the local biodiversity and don't leave a negative impact.

Here are some examples of what your plan could include:

- Share guidelines with participants to minimize the disturbance to marine life, such as avoiding excessive speed or noise near habitats.
- Work with local authorities to create maps or digital platforms displaying the boundaries of marine protected areas and restricted areas.
- Avoid introducing alien and invasive plants or animals in soils, or as plant matter, seeds or insects attached to vehicles, equipment or clothing.
- Encourage sailors to navigate designated channels or marked courses to protect sensitive habitats, such as seagrass beds, coral reefs, or important spawning grounds.
- Use essential lighting only, avoid lighting in known wildlife corridors (e.g. along watercourses), especially at night.

Agenda 2030 target:

22. World Sailing will develop a biosecurity strategy by 2022 that includes assisting MNAs to create biosecurity plans in addition to a biosecurity plan for World Sailing's own events to minimize the risk of spreading invasive species.



Clean Regatta targets

ENVIRONMENTAL STEWARDSHIP

- ☐ Host a Beach or Marina Clean-up
- ☐ Promote Alternative Transportation
- ☐ Increase Awareness of Wildlife and Habitat Protection
- ☐ Offer Vegetarian or Vegan Alternatives



Marine Megafauna Protection Plan

Boats can seriously harm [marine megafauna](#) if they meet along with potentially dangerous injuries to sailors as well. Many marine megafauna are endangered animals and as boats become faster the risk of harm to these animals increases.

Therefore, it is essential to have a protection plan in place. This will be dependent on the type of event and boats competing. To understand what should be included in your Marine Megafauna Protection Plan please refer to World Sailing's Marine Megafauna Guidance.



Agenda 2030 target:

23. In conjunction with partners, World Sailing will produce guidance, as necessary, to mitigate negative impacts sailing can have on marine cetaceans by 2023.

Documents to refer to:

- World Sailing Marine Megafauna Guidance
- Planning sheet
 - On water ops tab

Clean Regatta targets

ENVIRONMENTAL STEWARDSHIP

- ☐ Host a Beach or Marina Clean-up
- ☐ Promote Alternative Transportation
- ☐ Increase Awareness of Wildlife and Habitat Protection
- ☐ Offer Vegetarian or Vegan Alternatives

Pollution Prevention Plan

A sailing event poses many pollution risks, such as [oil spills](#) from the support fleet, litter pollution and detergent contamination. Therefore, it is key for a plan to be in place to ensure possible pollution is mitigated.

A pollution prevention plan can include:

- Waste pickups to prevent litter entering the water.
- Mark surface water drains to prevent groundwater pollution from solvents/detergents.
- Spill kits in place near water entry points especially at the refuelling doc, to reduce the risk of oil polluting the water.
- Refuelling procedures need to be clear and communicated with boat drivers to ensure no fuel enters the water
- Water only wash down should be enforced in boat parks to ensure that no detergent or other cleaning products, used when cleaning the boats, run into the water.
- Publicise the importance of [coral reef safe sunscreen](#) to athletes, teams, officials and staff.

Document to refer to:

- Planning sheet
 - Water tab
 - On water ops tab



Clean Regatta targets

GREEN BOATING

- ☐ Use Eco-Smart Management Techniques
- ☐ Prevent Toxins from Entering the Water
- ☐ Encourage Green Boating Practices

Working with partners and suppliers

World Sailing Events will be expected to engage with their partners, suppliers and third-party venues across their supply chain on sustainability. **They will be expected to establish and implement a sustainable procurement code that sets the sustainability expectations for partners, suppliers and third-party contracts.** This will include:

- Supporting and accelerating end of life options for boats and associated equipment that currently cannot be recovered.
- Support alternatives forms of packaging to remove single use plastics from the supply chain.
- Avoiding certain materials that have a negative impact in their production and are difficult to dispose of, such as PVC in branding. Wood should be sustainably sourced, e.g. certified FSC (Forestry Stewardship Council) or equivalent.

Sustainable procurement

For an event there is often considerable procurement needed especially relating to branding for the event. When identifying suppliers, we ask that you ensure you have an end of life plan for the product. For example, how will you avoid the product going to landfill. If possible, equipment should be rented. Additionally, please consider how avoidable single use items can be mitigated such as using cable ties attached to branding.

All suppliers should be provided with World Sailing's [Contractor and Supplier Sustainability Questionnaire](#).

Always question the sustainable sourcing hierarchy:

- If the product really needed?
- Whether it is needed in the given quantities?
- Can it be leaser or rented instead?



Document to refer to:

- Planning sheet
 - Branding tab

Single Use Plastics

Plastic pollution is very visible in sailing so as a community we can appreciate this issue and the problems caused by single use plastics.

Single use plastics and other single use items should be avoided. This may take [planning](#) and working with your suppliers such as catering to ensure there are no single use items such as cutlery, cups or [straws](#).

Instead look at alternatives such as providing [water stations](#) where refillable water bottles can be used. The main area of single use plastics is often in catering and food provision. To avoid using single use plastics in this instance provide reusable [dinnerware](#) such as chinaware plates and metal cutlery. If single use items can't be avoided consider those that are easily compostable such as, wooden ones, however, be aware that these can contain plastics that prevent them from being composted or recycled.

Agenda 2030 target:

12. World Sailing will abolish the use of single use plastics (with the exception of boat branding) at all of its events by 2019.

Document to refer to:

- Planning sheet
 - Clean regatta tab
 - Waste tab

Clean Regatta targets

ELIMINATION OF SINGLE-USE ITEMS

- ☐ Eliminate Single-Use Water Bottles and Provide Water Refill Stations
- ☐ Eliminate Plastic Straws
- ☐ Serve Food with Plastic-Free Dinnerware
- ☐ Skip Bags or Go Reusable
- ☐ Award Practical Items or Use a Perpetual or Upcycled Trophy

Document to refer to:

- Planning sheet
 - Waste tab
- Event waste management

Waste management

- A comprehensive waste management plan needs to be in place on site to ensure all waste streams from the event are covered.
- A key target is to ensure that no waste enters the marine environment.
- The waste provision for the site is specified in the Event waste management.
- See slide 47 onwards for more detail on event waste management.

Gender Equity

World Sailing Events are expected to promote gender equity across their event operations to ensure equal opportunities are available. World sailing Events are expected to support World Sailing's Agenda 2030 targets of achieving 50% gender equality by:

- Promote gender equity in positions of responsibility both on and off the water

Agenda 2030 targets:

25. World Sailing will achieve athlete gender equality at an event level at all World Sailing organized events by 2019.

26. World Sailing will achieve gender equality for race officials at Olympic and World Cup championships by 2028.

27. World Sailing will encourage its sanctioned Special Events to achieve a 50% gender equality for competing teams (including shore crew) by 2028.



Safeguarding

- World Sailing believes that the welfare and interests of vulnerable populations are paramount in all circumstances. Behaviour and actions that constitute harassment and abuse will not be tolerated and constitute a violation of the World Sailing Code of Ethics and the International Olympic Committee (IOC) Code of Ethics.
- Everyone who participates in Sailing has the right to a positive and enjoyable experience of sport in a safe environment. World Sailing acknowledges the duty of care to safeguard and promote the welfare of all individuals involved within Sailing.
- Therefore, it is key for event organisers to have a safeguarding plan in place, this can be adopted from the World Sailing's [Safeguarding Policy](#) and raise awareness about safe sport

Energy

The type of energy used at events can have a large impact on the carbon footprint of the event. Therefore, World Sailing has the following aims for energy at events:

- Reduce the carbon footprint of power provision
- Reduce the impact on air quality for stakeholders at events
- Accelerate hydrogen innovation in energy supply
- Renewable shore power to be utilised
- Hydrogen or HVO to be used if diesel generators are required
- Ideally clean energy will be utilised wherever possible with the target to reach 100% of energy from renewable sources.
- All data on energy used at the event should be reported to World Sailing.

Document to refer to:

- Planning sheet
 - Energy tab



Non-Fossil Fuelled Boats

- World Sailing is a signatory of the UN Sport for Climate Action Framework and is committed to reducing the carbon footprint of our operations.
- Fossil fuelled boats compromise a large proportion of event carbon footprints. Therefore, alternatively fuelled boats are needed to ensure the carbon footprint of events is reduced.
- Hydrogen or electric official al boats can be a good alternative to traditional fossil fuelled boats since these can be powered with renewable energy.



Agenda 2030 target:

16. World Sailing will specify that all official boats (safety dependent) used at World Sailing organized Olympic Class events will not be solely reliant on fossil fuels for propulsion by 2025.

Document to refer to:

- Planning sheet
 - On water ops tab

Clean Regatta targets

GREEN BOATING

- ☐ Use Eco-Smart Management Techniques
- ☐ Prevent Toxins from Entering the Water
- ☐ Encourage Green Boating Practices

Coach Boat Reduction

Agenda 2030 target:

17. World Sailing will reduce the number of coach boats with combustion engines by 50% (vs 2017) that are allowed at World Sailing organized Olympic Class events by 2024. This will be safety dependent.

The number of coach boats at events has reached over 600 in the last ten years, almost one coach boat per boat competing. This comes with a high associated carbon footprint due to the fossil fuels required to power the boats.

A quota of 1 coach boat for every 2.5 boat competing was put in place at the Sailing World Championships in 2023, with safety in mind for certain classes this increased. This helped reach a 45% reduction in coach boat numbers compared to Santander in 2014 which saw over 600 coach boats on the water.

All World Sailing events will need to implement this quota-based system to control the number of coach boats. Other events are encouraged to adopt this quota system, whilst maintaining the safety of sailors.

Agenda 2030 target:

20. World Sailing will fully integrate the Para Sailing World Championships with the World Sailing World Championships from 2022.

Para Sailing

For World Sailing Championships the Olympic classes and Para classes will be hosted at the same event either at the same venue or another venue close by. This is important because it brings all the top sailors globally together for the event no matter their physical ability in a range of classes.

The Para Sailing World Championships were integrated into the Sailing World Championships for the first time in 2023, held at Braassemermeer. This is a great step for social sustainability and inclusion within sailing.



Sustainable Accommodation

Agenda 2030 target:

12. World Sailing will abolish the use of single use plastics (with the exception of boat branding) at all of its events by 2019.

Document to refer to:

- Planning sheet
 - Accommodation tab

Accommodation can be a significant source of emissions. It is key that hotels are within walking or cycling distance to the venue to avoid unnecessary travel. In line with World Sailing's Agenda 2030 there should be no single use plastic provided in rooms.

Ideally the accommodation provider would have green credentials or certifications.

Accommodation providers should complete World Sailing's Sustainable [Accommodation Questionnaire](#) to give World Sailing a better understanding of the accommodation provided.



Document to refer to:

- Planning sheet
 - Food tab

Food

Food at events can be a large source of non-recyclable waste. Therefore, it is key that there is no avoidable single use plastic such as plastic wrapping or bags given out with lunches.

Food choice is also important unsustainable food choice need to be avoided such as endangered fish species on the ICUCN Red List. Additionally, there should be one plant-based option per meal and only sustainably source seafood should be served.

To ensure food waste is avoided a food reuse partner such as a charity should be identified to donate unused food. This will also ensure food not used is diverted from composting.

Reduced meat menus are favourable since farming livestock for their meat is responsible for a large proportion of global greenhouse gas emissions.

Locally sourced food and drink should be prioritised.

Clean Regatta targets

ENVIRONMENTAL STEWARDSHIP

- ☐ Host a Beach or Marina Clean-up
- ☐ Promote Alternative Transportation
- ☐ Increase Awareness of Wildlife and Habitat Protection
- ☐ Offer Vegetarian or Vegan Alternatives

Document to refer to:

- Planning sheet
 - Temporary Infrastructure tab

Temporary infrastructure

Temporary infrastructure is often required to facilitate an event, such as stages or marquees. An end-of-life plan for all temporary infrastructure should be in place to avoid the infrastructure ending up in landfill, for example it could be reused, donated or recycled. Ideally temporary infrastructure should be rented for the event such as staging or any marquees.

Any wooden temporary infrastructure should be FSC wood, ensuring it is from a sustainable source.



Accessibility

It is essential that all World Sailing events are accessible for all. The areas that need to be considered are website materials, pre-event around transport plans and available facilities, mobility, signage, facilities and seating. In the event planning document there is a checklist to help you plan your event accordingly.

For more information on how to ensure your venue is accessible please refer to the World Sailing Accessibility Standard.

Document to refer to:

- Planning sheet
 - Accessibility tab
- Accessibility Guidance



Engagement

- Communicate efforts to sailors, volunteers and staff on topics of importance
 - Biodiversity protection
 - Invasive species
 - Waste
 - Travel
 - Single use items
 - Education and engagement activities

Biodiversity protection engagement

- Educate and publicise steps being taken to protect biodiversity
- Invasive species
 - For example, use the World Sailing invasive species poster to ensure sailors take the steps to reduce the spread of invasive species. Ensure this poster is attached to any communications to sailors before the event.
- Habitat protection
 - For example, the benefit of water only wash down to prevent the spread of toxins from cleaning chemicals being washed into the marine environment

Waste

Educate the sailors and remind in briefing about the waste disposal methods available and the importance of waste separation.

Single use items

Encourage sailors, volunteers and staff to bring their own reusable water bottles, coffee cups etc. to avoid using single use items

Tell them in advance that there will be no provision of typical single use items, so they need to bring alternative reusables

Transport



Document to refer to:

- Planning sheet
 - Transport tab
 - Travel tab

Often transport is the largest source of emissions for events. Therefore, once at the event athletes, coaches, staff and fans should be encouraged to move around using active or public transport. These are the aims around transport for a World Sailing event:

Reduce the footprint associated with transport including organisational and event logistics

Communicate and engage the organisation/events/teams and fans around active and public transport

Engage suppliers on reducing transport footprint

Clean Regatta targets

ENVIRONMENTAL STEWARDSHIP

- ☐ Host a Beach or Marina Clean-up
- ☐ Promote Alternative Transportation
- ☐ Increase Awareness of Wildlife and Habitat Protection
- ☐ Offer Vegetarian or Vegan Alternatives

Local Community Outreach

When hosting a large event, it's important to engage the local community in the event. This could be through organising beach cleans or developing an education programme for local school children.

For example, educating [local](#) school children on biodiversity issues and allowing them to try sailing likely for the first time since sailing is not an easily accessible sport for children to get into. A good case study of this is the [2023 Formula Kite Europeans](#).

Agenda 2030 target:

24. World Sailing will ensure every World Sailing event engages with the local community through outreach activities by 2020 and encourage national events to replicate.

Document to refer to:

- Planning sheet
 - Clean Regatta tab

Clean Regatta targets

COMMUNITY INVOLVEMENT

- ☐ Publicize Your Sustainability Efforts
- ☐ Involve Local Organizations
- ☐ Post Educational and Reusable Signage
- ☐ Serve Local Food or Source Seafood Sustainably

Activate

During the event it is important to activate the sailors around sustainability and actions they can take to reduce their impact. This includes:

- Encourage low carbon and active transport
- Water only boat cleaning
- Mark all surface water drains

- Planning sheet
 - Contract requirements tab
 - Data tab
- Event Report Guidance

Reporting

World Sailing events will be expected to produce a Sustainability report post event this will detail how the sustainability targets were met, and the steps taken to achieve these. In addition, the report will include a detailed carbon footprint of the event.

Data requirements:

- Tonnage of waste and amount of waste split by type e.g. recycling, reuse, recover, landfill, composting, food waste, hazardous waste
- Fuel consumption for mains and temporary power, support boats.
- Travel for athletes, staff and volunteers, including passenger distance from flights, mileage from transportation, fuel for additional equipment e.g. forklifts and cranes.
- Accommodation provided – number of nights spent at event for staff, athlete and sponsors.
- Water – litres of drinking water and litres of water used during the event.

Report Contents

- Energy
- Report on utility used during the event
- Detailed carbon footprint of the event
- Actions taken to reduce carbon footprint
- Transport
- Food and beverages provided
- Water
- Diversity and inclusion
- Education
- Actions to achieve the Clean Regatta Framework – this will likely be already covered in the report, but ensure all 20 best practices have evidence

More information on event reporting can be found on slide 60.



What a sustainable event looks like in practice

- On water
 - Robotic marks
 - Decarbonised support fleet
 - Marine mammal/megafauna plan
- On land
 - Waste management – separated waste, no waste to landfill
 - Water only washdown
 - Biosecurity plan
 - Spill kits
 - Renewable energy
 - Education

Checklist

Sustainability area	Sailing Event	Other WS events e.g. Annual Conference
Sustainability Plan	X	X
Adopt ISO20121 guidelines	X	X
No single use plastics	X	X
Achieve Platinum Clean Regattas status	X	
Drinking water stations	X	X
Mark all surface washdown drains	X	
Regular litter picks to ensure zero waste enters the water	X	
Know local regulations and location of any designated areas	X	X
Record and report on utility used during the event	X	X
Create a report on specific measurements as specified by World Sailing	X	X
Ensure all waste stations are clearly marked and provision of both recycling/composting and non-recycling are next to one another	X	X
Source wood that is FSC (Forest Stewardship Council) certified	X	X
Organise sustainability educational activity for competitors	X	
Specific water only boat cleaning	X	



World Sailing

Drinking Water Provision

At World Sailing Events



Water refill stations

- Providing water refill stations across the event site (inside and outside) is a key step to ensure that single use plastic bottles are not used by athletes.
- Refill stations encourage sailors to bring their reusable water bottles rather than relying on larger plastic bottles of pre bottled water.
- It is key that there are enough refill stations on the event site to provide adequate water provision to sailors, coaches, volunteers, race officials and staff.
- Please ensure you adhere to any local guidelines and legislation on water provision at events.
- For a World Sailing event we would expect one water refill station for every 100 athletes. These should be evenly spaced throughout the site as facilities allow.
- If there are multiple sites for the event, such as, different boat parks depending on class then this ratio applied to each site.
 - For example, an event with 2 sites housing collectively 1000 sailors should split the water stations based on number of sailors at each site. If one site has 800 sailors, 8 stations should be in place, if the other site has 200 sailors, 2 stations should be in place.



On water provision

- Drinking water provision on water is also important to ensure the health of those on the water.
- This should be held on race management boats for competitors, coaches, race officials to use.
- To keep the water cool insulated containers are best, with a capacity of around 20 litres.
- 20 litre container of insulated water per race-course.
- The provision of this water should be communicated with teams, competitors, volunteers and race officials so it is utilised.

On land examples



On water examples





Waste Management



Aims

Have a clear process for waste management that:

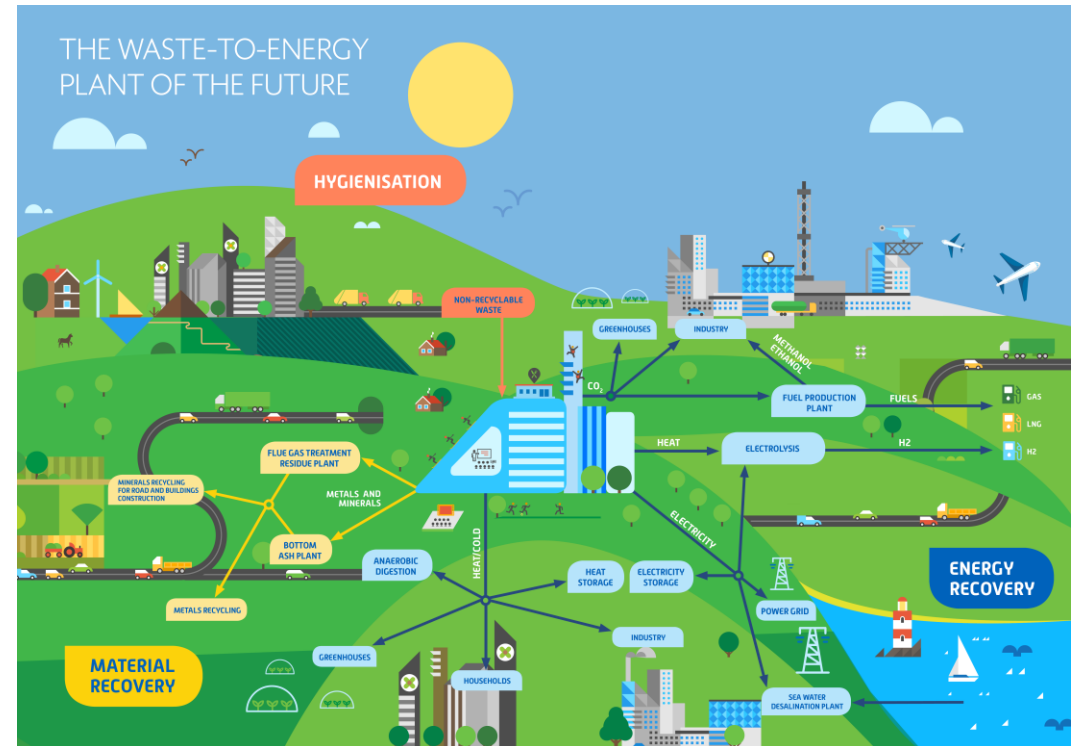
- Eliminates unnecessary waste whilst following the waste hierarchy
- Reduces the amount of waste produced
- Delivers the same or similar service from market to market
- Identifies and captures all waste streams
- Is able to influence the organisational suppliers and procurement code
- Is able to influence the sporting, events and marine industry, creating engagement opportunities with host cities

Targets

- 60% of total waste by weight to be recycled
 - Zero avoidable Single Use Plastic*
 - Zero waste to landfill
 - General waste reduction needs to be our key objective. Achieved by:
 - Producing less waste
 - More recyclable waste being recycled rather than ending up in general waste
 - Clear signage to ensure this delivery
- * Readily available, reusable, cost competitive solution can be implemented

The Waste Hierarchy

The waste hierarchy is our guide to good waste management.



Waste types requiring management at World Sailing Events

- General Waste/Trash
- Recycling
 - Cardboard
 - Paper
 - Glass
 - Plastic
 - Cans
- Food Waste/Compost
- Plastic Films
- Hazardous Waste
- Medical Waste and Sharps containment
- Branding
- Wood and Dunnage
- Building Materials

Single Use Plastics

- World Sailing has set out a target in Agenda 2030 to eliminate single use plastic from World Sailing events.
- Certain products in particular are considered unacceptable at World Sailing events. Such items are:
 - Bottled water and drinks
 - Cable/Zip Ties
 - Catering
 - Food containers
 - Clingfilm

Waste Compliance

Whilst each country and event site we visit will differ in terms of waste legislation and their ability to process different materials we are required to manage our waste effectively and ensure:

1. No waste enters the water
2. Hazardous waste is secure and separated
3. We minimise waste wherever possible and separate to the best disposal facility
4. Partners, Suppliers and Sponsors are aware that materials they bring onto sites should be removed by them
5. Single-use plastics are not brought on to World Sailing event sites.

This requires:

1. Sufficient provision of appropriate bins for segregation and adequate collection scheduled
 - a) General waste, recycling, hazardous, other waste e.g., carbon fibre and medical waste
2. Effective signage and briefings given to all staff and visitors as part of the site inductions.

Choosing the Contractor

- Contractors are expected to provide all waste data for each waste stream.
- Contractors should be able to align with World Sailing's Agenda 2030 objectives concerning waste management and carbon including achieving zero waste to landfill.
- Waste contractors should be able to provide a clear record of their waste removal (supply) chain. This information should be supplied at the tender stage to ensure World Sailing's waste management is not left open to public scrutiny.
- Waste contractors should be advised of the extent of World Sailing's operations including that operational areas are at the water-land zone and appropriate protection of both environments are key to delivery.
- Waste management contractor will preferably have staff to manage cleaning, sorting and maintenance duties onsite or can advise of an appropriate clean team provider to ensure clean and well-maintained sites.

Receptacle provision

- Please see Waste Provision spreadsheet for minimum requirements.
- All docking areas should have suitable waste receptacle provision: general waste, recycling and food waste/compost
- All suppliers/charters should provide suitable waste provision aligned with those of World Sailing and supply details to Sustainability.
- One bin station should be in place for each 100 athletes.
 - If there are 400 sailors in one boat park then four bin stations are needed however, these should be evenly placed throughout the boat park, including entrances and middle of the boat park.

Waste provision

Location	General Waste	Mixed Recycling: Plastic, Cans, Cardboard and Paper	Food Waste	Hazardous	Other	Notes
Boat Park						
Entrance/Exit	1 x 1101l	1 x 1101l	1 x 240l			
Top of Slipways - sailing boats and coach boats	1 x 1101l	1 x 1101l	1 x 240l	1 x 80l		
Middle of site	1 x 1101l	1 x 1101l	1 x 240l	1 x 80l	ERH	Equipment Recycling Hub (ERH) with multiple containers for carbon fibre, glass fibre, sails, rope, clothing, blocks and bits
Medical				Medical Waste Bin		
CATERING						
Catering waste area	1 x 240l	1 x 240l	1 x 240l		1x240l Glass*	*If glass bottles are being used
MEDIA						
Media offices	1 x 240 l	1 x 240 l				
RACE MANAGEMENT						
Race offices	50l - 60l	50l - 60l				
Measuring area	1 x 240l	1x 240l				
ON WATER						
Race Officials	On board bags	On Board bags				Communication around this prior to going on water and the provision of disposal options at top of slipway
Coach Boats	On board bags	On Board bags				

Collection

A collection timetable should be created and agreed contractually with the waste company. If using public waste providers liaise with them in terms of the typical collection timetable and if this needs adjusting due to the scale of the event.

Collection should be at an appropriate time of day when the site is clear to ensure the process does not interrupt the sporting schedule.

Suggested waste collection frequency, will vary depending on size of event:

- General waste and mixed recycling = daily
- Food waste = daily
- Hazardous waste = at end of event
- Equipment Recycling Hub = at end of event distribute to relevant end of life routes identified

Actions

- Site assessments of required provision. Carried out by local team and potential waste management providers. A suitable timetable for pick-ups should be included in contractor proposals/bids.
- Clear understanding of waste management provision required/provided for all World Sailing operated and non-operated sites including on-water operations.
- Data requirements as found on the reporting slide. Requirements should be included contract of waste management company and should be applied to all operations areas including sites not operated by World Sailing.
- Choice of contractor(s) including provision of cleaning/litter picking and sorting maintenance team.
- A site map including all waste receptacle points should be available for all sites. Clear signage and details of site waste management should be included in site inductions and should be included in the event handbook/manual.
- Two weeks post event all data should be provided to the Sustainability Team for internal and external reporting.

Reporting: Waste Data

The waste produced at the event will be reported to World Sailing Sustainability, broken down by the type of waste and also included in the event sustainability report.

Waste		
Total tonnage of waste	tonnes	Name of Supplier What waste management segregations are available/Types of waste streams? Is there food waste composting/digesting? Can we get our data relating to waste? If not can we get the percentage estimation for our waste?
Waste sent for Recycling	tonnes	
Waste sent for Reuse	tonnes	
Waste sent for Recovery (Energy from Waste)	tonnes	
Waste sent for Landfill	tonnes	
Waste sent for Composting	tonnes	
Food waste	tonnes	
Hazardous Waste	kgs	
	kgs	Auditing of events by WS Sustainability
Single use plastic avoidance	# types of single use plastic	

Recommendations

- Each department needs to carry out a waste audit to understand where problem areas are occurring and whether reusable, lower impact or alternative products or methods could be utilised.
- A target regarding single use plastic has to be set organisationally. The office needs to be a reflection of this target.
- The use of clysar in packaging for iQFoil wings need to be addressed. A clear evaluation of alternatives needs to be carried out and discussions with sponsor/suppliers of future fit for purpose innovative products need to explored.
- Waste management suppliers need to be able to verify its supply chain to ensure World Sailing products aren't identified as part of illegal dumping practices.
- Standardised waste receptacle branding.



Sustainability Report

World Sailing Event



Report to include

- Energy
- Report on utility used during the event
- Detailed carbon footprint of the event
- Actions taken to reduce carbon footprint
- Transport
- Food and beverages provided
- Water
- Diversity and inclusion
- Education
- Clean Regatta Targets

Report deadline

- The report should be completed and given to World Sailing Sustainability within 3 months of the event finishing.
- Additionally, the sustainability report should be submitted to Sailors for the Sea to achieve Clean Regatta Platinum certification in this timeframe.

Data

The data from the following operational areas needs to be reported:

- Waste
- Fuel consumption
- Low carbon travel planning
- Accommodation
- Water protection and provision

Waste

The amount of each waste type produced at the event should be reported on

Waste		
Total tonnage of waste	tonnes	Name of Supplier What waste management segregations are available/Types of waste streams? Is there food waste composting/digesting? Can we get our data relating to waste? If not can we get the percentage estimation for our waste?
Waste sent for Recycling	tonnes	
Waste sent for Reuse	tonnes	
Waste sent for Recovery (Energy from Waste)	tonnes	
Waste sent for Landfill	tonnes	
Waste sent for Composting	tonnes	
Food waste	tonnes	
Hazardous Waste	kgs	Auditing of events by WS Sustainability
Single use plastic avoidance	# types of single use plastic	

Fuel Consumption

The following areas should be reported on in relation to fuel consumption

Having a recording sheet at the fuelling dock can help provide this data easily.

Fuel Consumption		
Mains power780-u	kWh	Energy use data(kWh), details of energy supplier and sourcing of energy eg. Coal powered, wind, solar etc. and/or percentage gained from renewables
Temporary Power	fuel type and litres	Renewable or non-renewable; size of generators, fuel type(diesel, HVO, biofuel)
Oil used in Temporary Power and HVAC	fuel type and litres	
Event operated support boats	fuel type and litres	Fuel dock data or supplier provided
Non-event operated registered boats	fuel type and litres	Fuel dock data or supplier provided

Low Carbon Travel Planning

Staff, athlete, volunteers and World Sailing staff travel should be accounted for here.

Low Carbon Travel Planning		
Passenger distance from flights	Flight route per passenger/distance and class of travel	Supplier agent or booked in-house
Transportation modes provided	Types of transport	Bus, train, taxi, rental vehicle etc
(Passenger) mileage from transportation	km	
Fuel for additional equipment forklifts, cranes, etc	fuel type and litres	

Accommodation

Staff, athlete, volunteers and World Sailing staff accommodation should be accounted for here.

Accommodation		
Accommodation provided	Types of accommodation	Hotel, Ecohotel, Airbnb/rental etc
Staff/ Volunteer Nights spent at events/site visits	# of room nights Location of accom	All rooms booked by supplier or in-house?
Athlete nights spent at events		All rooms booked by supplier or in-house?
Sponsor nights spent at events		All rooms booked by supplier or in-house?
Fan nights spent at events		All rooms booked by supplier or in-house?

Water protection and provision

Water Protection and Provision		
Litres of drinking water	Litres	Supplier Usage from bills/landlord.
Litres of water	Litres	Supplier Usage from bills/landlord.
Water pollution incidents reported	#	
Species incidents reported	#	

Equity, Diversity and Inclusion

What steps did you take to ensure the event met the EDI targets?

For example, what was the gender balance of race officials, volunteers and staff?

What was the split of people in high powered position from minority groups?

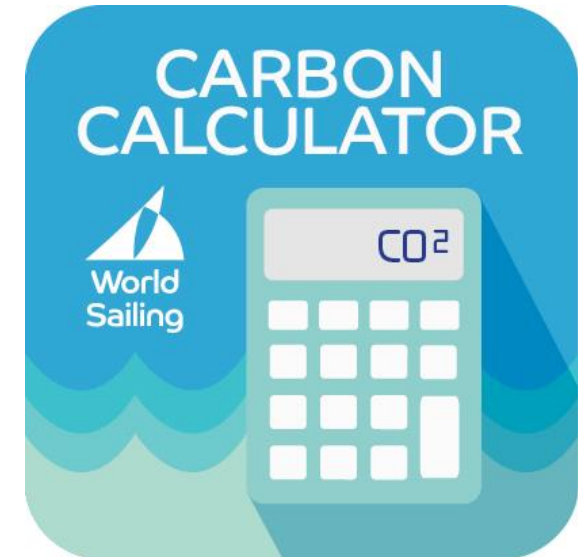
Carbon Footprint

Detailed carbon footprint of the event

Including scopes 1, 2 and 3.

Detail actions taken to reduce the carbon footprint of the event.

For help calculating the carbon footprint of the event the carbon calculator provided by World Sailing is a good a place to start.



Catering

What did catering look like at the event?

Who was catering provided to?

What forms of plate ware and packaging was used?

Did the menu have plant-based options?

Water provision

Were refill stations in place across the site?

How were the drinking stations distributed?
Was a ratio used?

Any data on the amount of water used from these refill stations can be useful to give an indication of how many times bottles were refilled and so single use plastic bottles were avoided.



Education

What education activities were undertaken?

Detail the steps taken to educate and engage the local community on sailing and sustainability.

Equity, Diversity and Inclusion

What steps did you take to ensure the event met the EDI targets?

For example, what was the gender balance of race officials, volunteers and staff?

What was the split of people in high powered position from minority groups?

Clean Regatta targets



The 20 best practice targets should be included

It would be great to include photos on each best practice and detail the steps taken to achieved each one.

Some of the best practice targets you might have already covered in the report but ensure all are mentioned.

Past examples

Document to refer to:

- Youth Worlds 2018 Sustainability Report
- Sailing World Championships Aarhus 2018 Report
- Youth Worlds 2023 Sustainability Report

